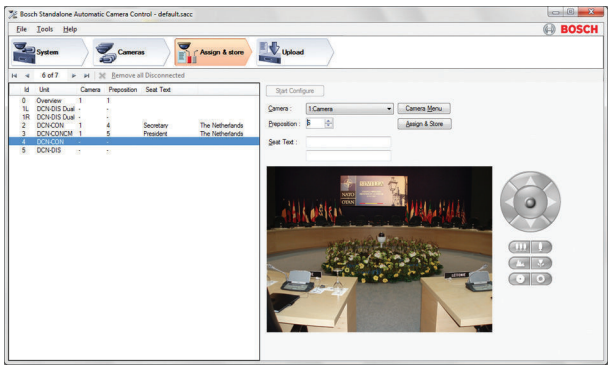


DCN-SWSACC Standalone Automatic Camera Control

www.boschsecurity.com



BOSCH
Invented for life



- ▶ On-screen Pan, Tilt and zoom control
- ▶ Supports Windows 7
- ▶ For use with DCN Next Generation and DCN Wireless Discussion Systems
- ▶ Print-out of configuration setting
- ▶ On-screen help facility

DCN-SWSACC Standalone Automatic Camera Control of the DCN Conference systems interfaces with the Bosch Allegiant or Autodome. It selects fixed or movable cameras to be activated to display the current active speaker at a conference.

Functions

When a chairman or delegate microphone is activated on the DCN Conference system equipment, the camera assigned to that position is activated. When none of the microphones are active, an overview camera is automatically selected. The image can be displayed on projectors or other screens together with information about the current speaker if required (such as delegate identification). The system operator has a dedicated screen, which also displays information about which camera is active. This system provides an extra dimension to conference proceedings.

The DCN-SWSACC software runs on a PC which is temporarily connected to configure the DCN Next Generation or DCN Wireless Discussion System and the Bosch Allegiant or Autodome.

With this PC the camera positions can be defined using the on-screen Pan, Tilt and Zoom control and stored as prepositions in the Autodome camera. At the same time a delegate position is linked to a camera preposition.

When all delegate positions are linked to camera prepositions the configuration needs to be uploaded to the DCN Conference system where it will be stored persistent in the CCU.

The configuration file can be printed and stored on the temporarily PC for later use. In case help or more information is needed the on-screen help can be activated from the software.

After configuration the PC is removed and Bosch Allegiant or Autodome is directly connected to the DCN Conference system.

Technical specifications

Electrical

Supported DCN systems	DCN Next Generation version 2.68 or higher
	DCN Wireless Discussion System version 2.68 or higher

Supported operating systems	Windows 7 Home Premium (32 and 64 bits) or above.
	Windows Vista Home Premium (32 and 64 bits) or above.
PC requirements	Dual core processor (2.66 GHz) and 2 Gb internal memory.
	At least one serial port (2 serial ports are preferred).
	In case a PC without serial ports is used one or two separate USB to serial port converters are needed.

Mechanical

Dimensions (H x W x D)	240 x 180 x 46 mm
Weight	0.375 kg

Ordering information

DCN-SWSACC Standalone Automatic Camera Control
 interfaces DCN Conference systems with the Bosch
 Allegiant or Autodome.
 Order number **DCN-SWSACC**

Represented by:

Americas:

Bosch Security Systems, Inc.
 12000 Portland Avenue South
 Burnsville MN 55337, USA
 Phone: +1-800-392-3497
 Fax: +1-800-955-6831
audiosupport@us.bosch.com
www.boschsecurity.com

Europe, Middle East, Africa:

Bosch Security Systems B.V.
 P.O. Box 80002
 5617 BA Eindhoven, The Netherlands
 Phone: + 31 40 2577 284
 Fax: +31 40 2577 330
emea.securitysystems@bosch.com
www.boschsecurity.com

Asia-Pacific:

Robert Bosch (SEA) Pte Ltd, Security
 Systems
 11 Bishan Street 21
 Singapore 573943
 Phone: +65 6571 2808
 Fax: +65 6571 2699
apr.securitysystems@bosch.com
www.boschsecurity.asia

China:

Bosch (Shanghai) Security Systems Ltd.
 201 Building, No. 333 Fuquan Road
 North IBP
 Changning District, Shanghai
 200335 China
 Phone +86 21 22181111
 Fax: +86 21 22182398
www.boschsecurity.com.cn

America Latina:

Robert Bosch Ltda Security Systems Division
 Via Anhanguera, Km 98
 CEP 13065-900
 Campinas, Sao Paulo, Brazil
 Phone: +55 19 2103 2860
 Fax: +55 19 2103 2862
al.securitysystems@bosch.com
www.boschsecurity.com